

# ELIT

## Down conductor attachment for HVC85

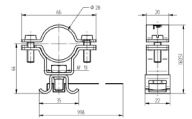
Down conductor attachment with Ø300 mm fastening strap for attaching high-voltage cable HVC-85 to ma

### Technical description

Pipe clamp / Down conductor bracket, in stainless steel A2, with tension band for mounting on pipe, with conductor brackets for HVC-85 conductor.  
 Material of pipe clamp with tension band: stainless steel A2  
 Tension band (length x thickness): 15 x 0.4 mm for pipes up to Ø 300 mm  
 Material of conductor brackets: stainless steel A2  
 Fit for conductor brackets: Ø 28 mm  
 Height of conductor guide: 27 mm  
 Manufactured in accordance with EN62561-4

### Advantages:

Pipe clamp / Down conductor attachment in stainless steel A2 with tension band  
 Can be attached to a wide range of different diameters of masts  
 Distance of the conductor guide: 27 mm  
 Manufactured according to EN62561-4



Product name/ Art.nr/ GTIN	ELIT NLF-HV85-27mm-FB15mm-ø300mm-A2/ 40170080/ 7070810036332
According to:	EN 62561-4
Mounting type conductor	With screw clamp
Suitable for diameter round conductor	28 - 28 Millimetre
Material of holder	Stainless steel 304 (V2A)
Mounting type holder	Tension band
Material of carrier	Stainless steel 304 (V2A)
Material of saddle clamp	Stainless steel 304 (V2A)
Material base part	Stainless steel 304 (V2A)
Pipe chucking range	30 - 300 Millimetre
Wall distance	27 - 27 Millimetre
Assembly height conductor holder	60,5 Millimetre